



## TLF SAMPLE COOLER

*Compact, efficient sample cooling for gases and liquids*

- Double helical coil design
- Most efficient sample cooler available
- Minimize cooling water needs

The TLF series sample cooler is the most efficient and cost effective sample cooler available. Optimal service for flows below 1800 ccm for both single phase and condensing heat transfer. Standard tube side materials are 316SS or Inconel® 625 for high chloride cooling water applications. Optimized for steam condensing service.

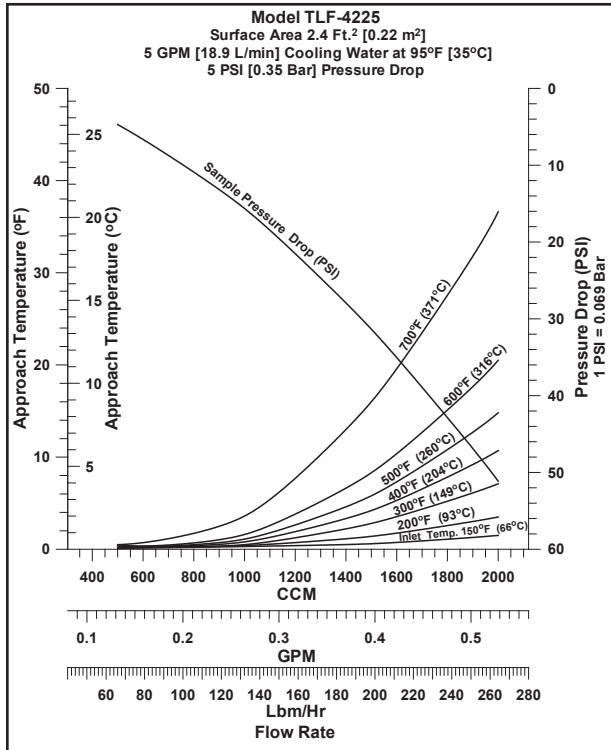
### Specifications - TLF Series

Model No.	Shell Design	Tube Design	Tube Material	Shell Material	Area	Weight	Part Number
TLF-4225	450 psi @ 650°F 31 bar @ 345°C	5000 psi @ 1000°F 344 bar @ 537°C	316SS. 1/4" O.D. x 0.042" MW	304/316SS	2.4 ft <sup>2</sup> 0.22 m <sup>2</sup>	12 lbs 5.5 kg	7-00686A
TLF-4225U	450 psi @ 650°F 31 bar @ 343°C	4400 psi @ 1000°F 303 bar @ 537°C	316SS 1/4" O.D. x 0.042" MW	304/316SS	2.4 ft <sup>2</sup> 0.22 m <sup>2</sup>	12 lbs 5.5 kg	7-00686B
TLF-42B5	450 psi @ 650°F 31 bar @ 343°C	5000 psi @ 1100°F 344 bar @ 593°C	Inconel® 625 1/4" O.D. x 0.035" AW	304/316SS	2.4 ft <sup>2</sup> 0.22 m <sup>2</sup>	12 lbs 5.5 kg	7-00686L
TLF-42B5U	450 psi @ 650°F 31 bar @ 343°C	5000 psi @ 1100°F 344 bar @ 593°C	Inconel® 625 1/4" O.D. x 0.035" AW	304/316SS	2.4 ft <sup>2</sup> 0.22 m <sup>2</sup>	12 lbs 5.5 kg	7-00686P
TLF-44B5	150 psi @ 250°F 10 bar @ 121°C	5000 psi @ 1100°F 344 bar @ 593°C	Inconel® 625 1/4" O.D. x 0.035" AW	Cupro-Nickel	2.4 ft <sup>2</sup> 0.22 m <sup>2</sup>	14 lbs 6 kg	7-00693E

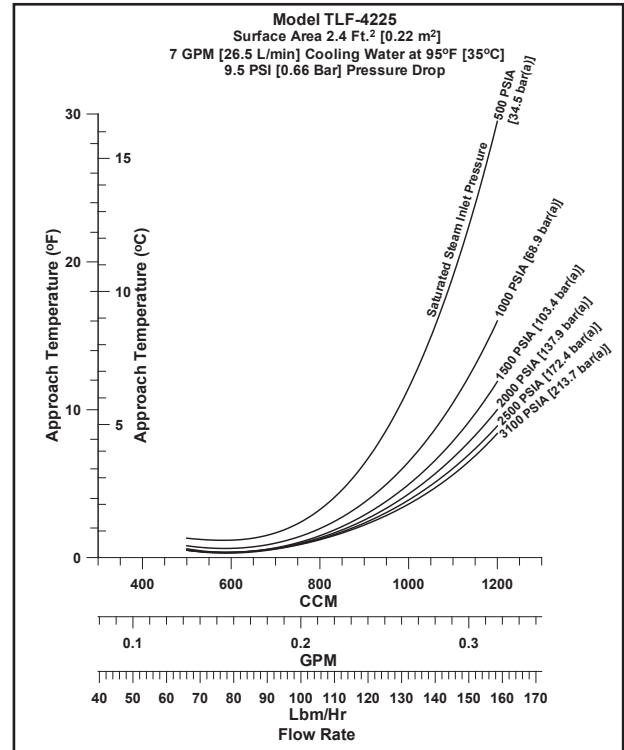
**NOTE:**

- Canadian Registration Number available for most models. Consult factory for CRN and other options and information.
- U in model number denotes ASME stamped model.
- Vessels are exempt from CE marking per PED 97/23/EC. Vessels are below or equal to the limits set forth in Article 3, Sections 1.1, 1.2, 1.3 and Section 2 as applicable, and are designed and manufactured in accordance with sound engineering practice (meets the general requirements of the ASME Section VIII, Division 1, Boiler And Pressure Vessel Code). Nameplate will bear the name of Sentry Equipment Corp. and safety instructions will be included per Article 3, Section 2.

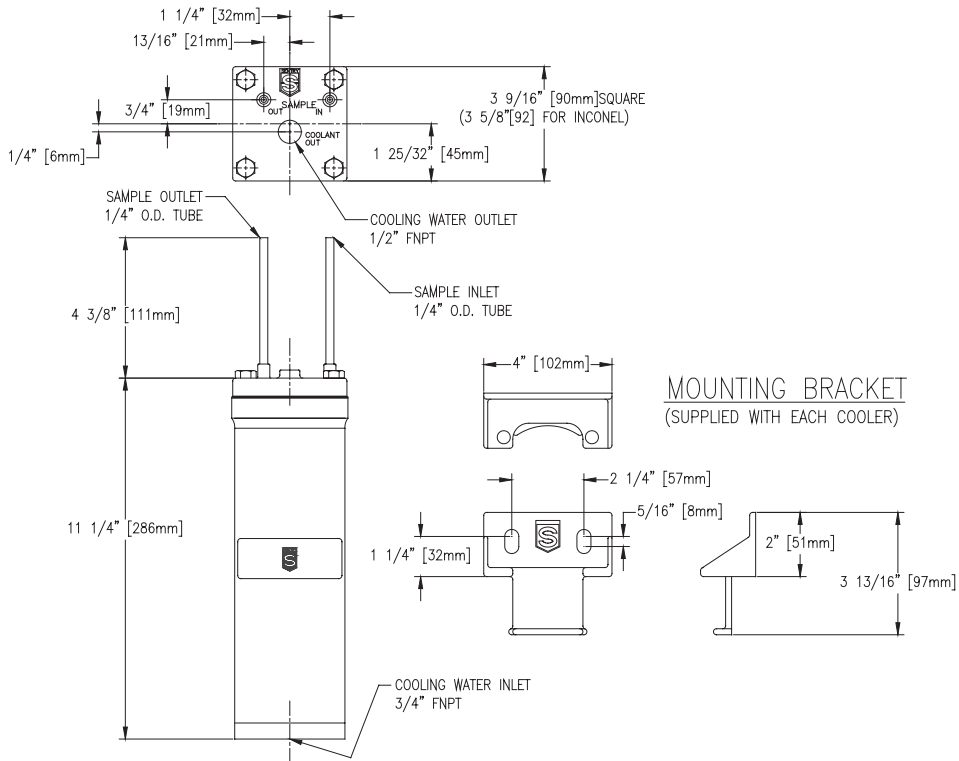
## Performance Curve - Water



## Performance Curve - Steam



Due to two-phase flow variability, please consult factory for pressure drop.



## SENTRY Equipment Corp

856 E. Armour Rd.  
 PO Box 127  
 Oconomowoc, WI 53066 USA  
 Phone: 262-567-7256  
 Fax: 262-567-4523

**E-mail:**  
[sales@sentry-equip.com](mailto:sales@sentry-equip.com)

**Website:**  
[www.sentry-equip.com](http://www.sentry-equip.com)

For further information, contact:

